

STUCCOAT® ONE COAT OVER CONTINUOUS INSULATION

Includes

CI

Crack/Impact
Resistant



Built-in
Air Barrier

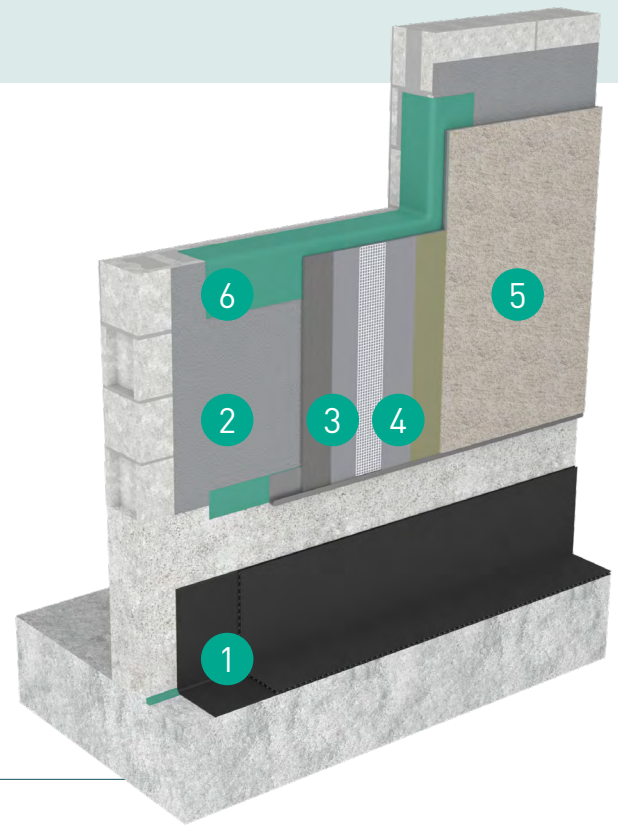


Wall Assembly Overview

A comprehensive, code-compliant stucco assembly that integrates proprietary air barrier system options and waterproofing with tie-ins from below-grade to the roof line — and at all openings and penetrations between. This StucCoat One-Coat wall assembly provides higher R-value and improved energy efficiency when combined with an approved continuous insulation board component.

The StucCoat One Coat finish is impact resistant and can be further enhanced with a reinforced crack isolation membrane layer for additional stress crack resistance. It may also be installed as a conventional system coating (scratch & brown) complying with ASTM C926. This assembly is ideal for use in commercial, residential and multi-family buildings.

The assembly is tested for compatibility at all connection points, creating a complete, weatherproof building envelope with an attractive aesthetic finish which is warranted in a single document.



Feature	Benefit
Consists of Comprehensive Barrier Systems	One whole wall system incorporates protection against the effects of air, water, thermal and vapor transmission
Built-In Continuous Insulation	Enhanced insulation of CI improves building energy efficiency
Complete Stucco Assembly	Code-compliant system that can be applied over various approved sheathing surfaces, providing flexibility for the builder/owner
Impact Resistance	Material strength & system design ensures a long-lasting service life for the structure
Compatibility Tested Assembly	Lowers cost, labor and risks by reducing steps, manufacturers, and components required for the project
NFPA 268 and 285 Compliant	When paired with Mineral Wool, it limits potential spread of fire to help ensure buildings and their occupants are safe
Integrated Assembly Design	Speeds construction times to keep projects on schedule

Components

1	Tremco Below-Grade Waterproofing Tied-in to Air Barriers at Grade
2	Dryvit/Tremco Air/Water-Resistive Barrier over Approved Sheathing Substrate
3	Continuous Insulation
4	StucCoat One Coat Stucco Assembly
5	Dryvit Texture, Color, or Specialty Finish
6	Tremco/Dryvit Sealant & Flashing Products Tied-In at all Rough Openings, Corners, Joints, Penetrations, Transitions at Windows, Connections and at Roof Parapets.



Construction Products Group

STUCCOAT® ONE COAT OVER OUTSULATION® PLUS

TESTING CATEGORY	PERFORMANCE TESTS	WHY IT MATTERS
Air and Water Resistance	<ul style="list-style-type: none"> Water Resistance & Penetration Air Leakage Nail Sealability Weathering/UV Exposure 	<ul style="list-style-type: none"> Seamlessly protects sheathing or substrate from incidental moisture and eliminates air infiltration Protects structure from a wide range of harsh and challenging weather conditions
Durability	<ul style="list-style-type: none"> Abrasion Resistance Freeze-Thaw Water & Mildew Resistance Indentation Hardness 	<ul style="list-style-type: none"> Allows drainage of incidental moisture on the wall for damage protection Has exceptional elongation and crack-bridging waterproofing characteristics below grade, guarding against movement that creates openings
Structural Strength	<ul style="list-style-type: none"> Impact Resistance Transverse Wind Load Material Strength 	<ul style="list-style-type: none"> Resists and is warranted against punctures Protects against stress and potential debris impact from high winds Maintains the structural integrity of the system components Evaluated for strong tensile adhesion between all system components
Fire Performance	<ul style="list-style-type: none"> ASTM E84 and E119 NFPA 268 Compliant NFPA 285 Compliant 	<ul style="list-style-type: none"> Assembly is in compliance with these standards when using mineral wool as the continuous insulation.

Ready to Get Started with a Whole Wall System?

If you're interested in making your next project easier with a code-compliant, ready-to-specify wall system, contact your local Tremco, Nudura or Dryvit representative at →

Nudura nudura.com/company/team
866.468.6299

Dryvit/Tremco tremcosealants.com/find-your-sales-rep
800.321.7906

Tremco CPG Inc. | 3735 Green Road | Beacwood, OH 44122 | 800.556.7752 | tremcocpg.com

Tremco Construction Products Group (CPG) brings together Tremco CPG Inc. and its Dryvit and Nudura brands; Willseal; Prebuck LLC; Tremco Barrier Solutions, Inc.; Weatherproofing Technologies, Inc. and its Pure Air Control Services and Canam Building Envelope Specialists offerings; and Weatherproofing Technologies Canada, Inc.



Use of the ® symbol indicates registration with the US Patent & Trademark Office and the Canadian Intellectual Property Office.