

# OUTSULITE® BP BACKER PANELS

Fluid-Applied



Self-Adhered



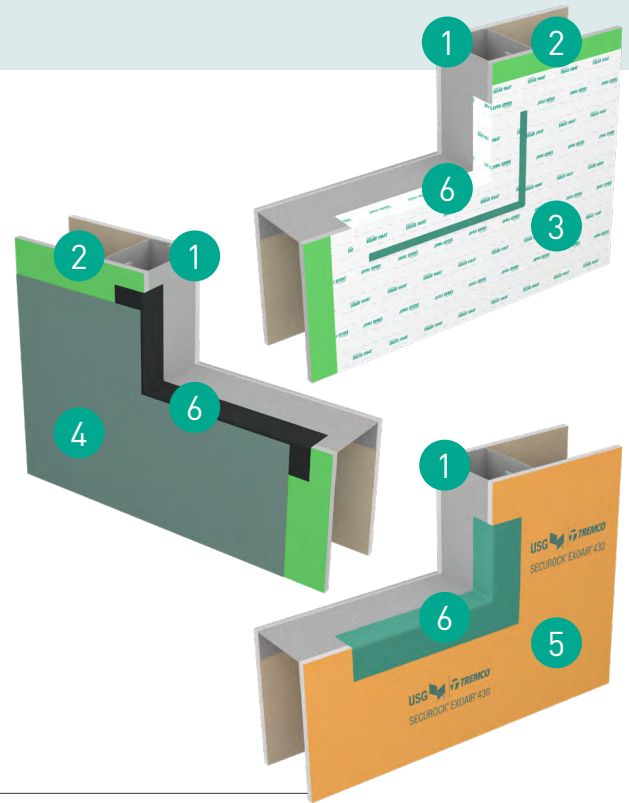
Factory Pre-Applied



## Wall Systems Overview

Outsulite® BP Backer Panels consist of a light-gauge steel frame with sheathing and pre-applied air barriers — with a range of technology options available based on project needs. These panels are designed for easy installation in the field, and can be finished in almost any aesthetic option desired, including any combination of Dryvit colors, textures or finishes, plus metal panels, masonry veneer, brick and more. All finish options can be added during prefabrication or on the jobsite.

When included as part of a whole wall system, Outsulite BP Backer Panels are warranted in a single document and are compatible with the building's Outsulation System, Dryvit® exterior finish, Tremco® below-grade waterproofing and all the exterior wall system transitions and connections, from the foundation to the roofline. No other manufacturer offers this level of efficiency and security for building design and construction.



Feature	Benefit
Prefabrication	Reduces the cost of time, labor and materials on the jobsite, improves production quality and efficiency, and helps avoid weather-related delays
Weatherability	Mitigates air infiltration / exfiltration and water penetration, with availability in vapor permeable or impermeable options
Compatibility-Tested	Simplifies the specification process and reduces risk of jobsite delays due to system interface issues
Unlimited Color, Texture and Finish Options	Allows for aesthetic design versatility with almost limitless, color, texture and finish options
Light Gauge Steel Frame Design	Prefabricated light gauge steel framed wall panels may be fabricated in balloon or load-bearing design
Versatility	Applicable for a wide variety of commercial, light commercial, industrial, multi-family and single-family residential structures

## Wall Systems Assemblies

1	Light-Gauge Steel Framing
2	Approved Sheathing
3	Tremco™ ExoAir® 110AT Air Barrier
4	Dryvit Backstop NTX, Tremco™ ExoAir® 120, 130, 220 or 230 Air Barrier
5	Securock® ExoAir® 430 Sheathing with Factory-Applied Air Barrier
6	Tremco Flashing and Sealants Tied-in to All Panel Terminations, Transitions and Penetrations



Construction Products Group

# OUTSULITE® BP BACKER PANELS

TESTING CATEGORY	PERFORMANCE TESTS	WHY IT MATTERS
Air and Water Resistance	<ul style="list-style-type: none"><li>Water Resistance &amp; Penetration</li><li>Air Leakage</li><li>Nail Sealability</li></ul>	<ul style="list-style-type: none"><li>Seamlessly protects sheathing or substrate from incidental moisture and eliminates air infiltration.</li><li>Protects structure from a wide range of harsh and challenging weather conditions.</li></ul>
Durability	<ul style="list-style-type: none"><li>Freeze-Thaw</li><li>Peel/Stripping Strength</li><li>Crack Bridging</li></ul>	<ul style="list-style-type: none"><li>Proves membrane flexibility and ability to maintain its integrity and adhesion to the substrate, even in challenging environmental conditions</li></ul>
Component Compatibility	<ul style="list-style-type: none"><li>Membrane Adhesion to Panel</li><li>Assembly Air Leakage</li></ul>	<ul style="list-style-type: none"><li>Allows for connection to other system components such as waterproofing and sealants.</li></ul>
Fire Performance	<ul style="list-style-type: none"><li>NFPA 285 Flame Propagation Test</li><li>Flame Spread Smoke Development</li></ul>	<ul style="list-style-type: none"><li>Provides fire resistance in exterior wall assemblies</li><li>Results meet applicable building codes</li></ul>

## Ready to Get Started with a Whole Wall System?

If you're interested in making your next project easier with a code-compliant, ready-to-specify whole wall system, contact your local Tremco, Nudura or Dryvit representative at →

**Nudura** [nudura.com/company/team](https://nudura.com/company/team)  
866.468.6299

**Dryvit/Tremco** [tremcosealants.com/find-your-sales-rep](https://tremcosealants.com/find-your-sales-rep)  
800.321.7906

Tremco CPG Inc. | 3735 Green Road | Beachwood, OH 44122 | 800.556.7752 | [tremcocpg.com](https://tremcocpg.com)

Tremco Construction Products Group (CPG) brings together Tremco CPG Inc. and its Dryvit and Nudura brands; Willseal; Prebuck LLC; Tremco Barrier Solutions, Inc.; Weatherproofing Technologies, Inc. and its Pure Air Control Services and Canam Building Envelope Specialists offerings; and Weatherproofing Technologies Canada, Inc.



Construction Products Group

Use of the ® symbol indicates registration with the US Patent & Trademark Office and the Canadian Intellectual Property Office.